

54/179

HOMES OF LEE'S CROSSING PLAT NO. 5

PART OF LEE'S CROSSING, A P.U.D.
SITUATE IN SECTION 34, TOWNSHIP 44 SOUTH, RANGE 42 EAST,
PALM BEACH COUNTY, FLORIDA, BEING A REPLAT OF A PORTION
OF LEE'S CROSSING PLAT NO. 2 (P.U.D.), AS IN PLAT BOOK 42,
PAGES 1 THROUGH 5.

179

P.O.B.
N.W. CORNER
LEE'S CROSSING PLAT NO. 2

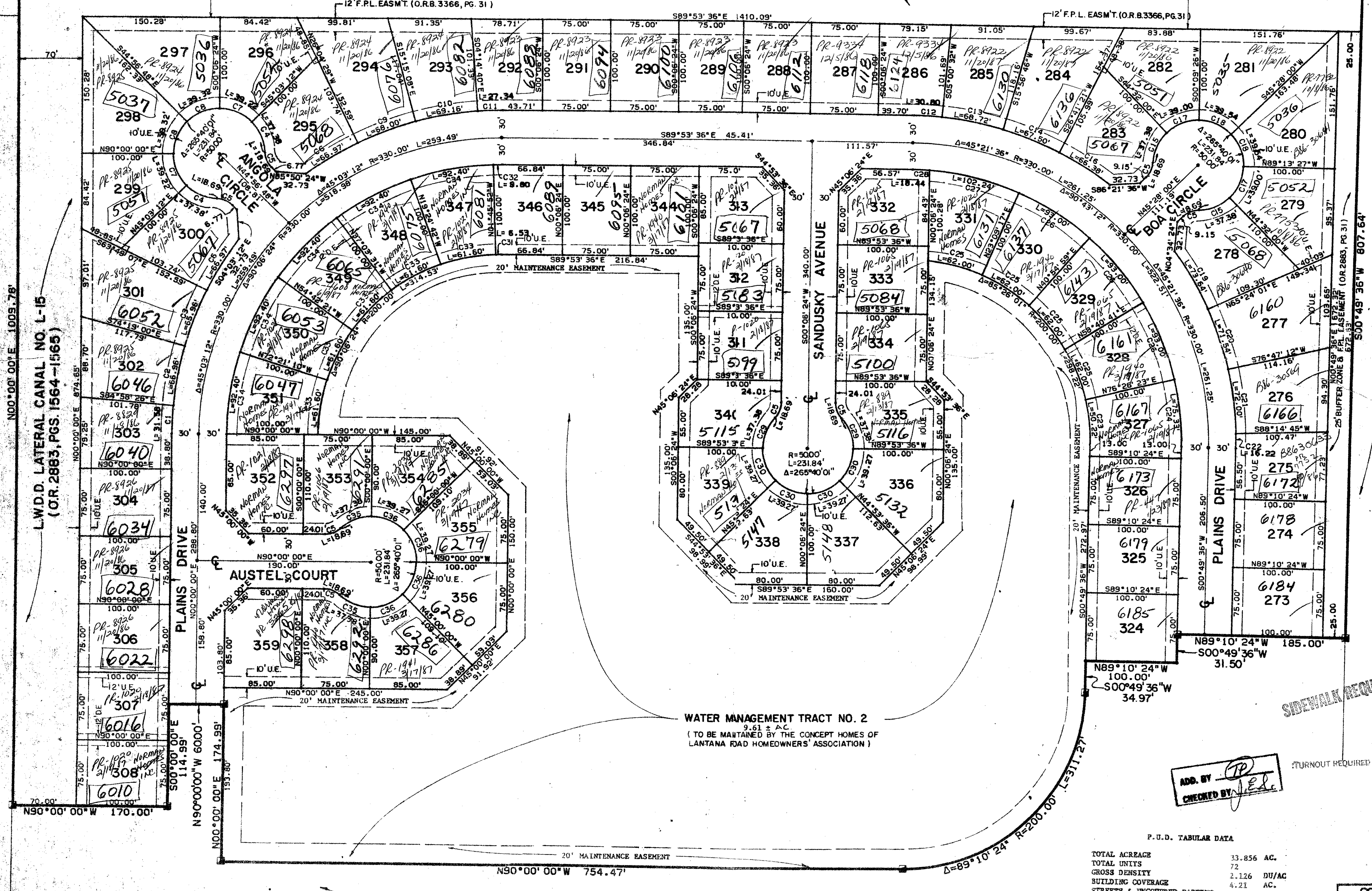
UNPLATTED

S89°53'36"E 1482.03'

SHEET 2 OF 2

UNPLATTED

L.W.D.D. LATERAL CANAL NO. L-14
(O.R. 2883, PGS. 1564-1565)



NO.	DELTA	RADIUS	LENGTH
C1	5°11'36"	360.00'	31.58'
C2	10°39'26"	360.00'	66.96'
C3	10°29'53"	360.00'	65.96'
C4	42°50'00"	50.00'	37.38'
C5	42°50'00"	25.00'	18.69'
C6	44°38'39"	360.00'	66.97'
C7	44°38'39"	360.00'	66.97'
C8	45°03'12"	50.00'	37.38'
C9	10°49'21"	360.00'	66.00'
C10	11°00'28"	360.00'	69.17'
C11	4°21'03"	360.00'	27.34'
C12	4°54'08"	360.00'	30.80'
C13	10°58'14"	360.00'	66.72'
C14	10°44'35"	360.00'	67.50'
C15	42°50'00"	50.00'	37.38'
C16	10°33'32"	360.00'	66.38'
C17	44°41'37"	50.00'	39.00'
C18	45°19'39"	50.00'	38.54'
C19	11°43'13"	360.00'	71.54'
C20	11°23'11"	360.00'	69.80'
C21	11°27'33"	360.00'	72.00'
C22	2°34'51"	360.00'	16.22'
C23	14°23'13"	200.00'	50.22'
C24	14°23'13"	300.00'	75.33'
C25	17°45'42"	200.00'	62.00'
C26	17°45'42"	300.00'	93.00'
C27	19°31'36"	300.00'	102.24'
C28	3°31'17"	300.00'	18.44'
C29	42°50'00"	50.00'	37.38'
C30	45°00'00"	50.00'	39.27'
C31	1°52'16"	200.00'	6.53'
C32	1°52'16"	300.00'	9.80'
C33	17°38'50"	200.00'	61.60'
C34	17°38'50"	300.00'	92.40'
C35	42°50'00"	50.00'	37.38'
C36	45°00'00"	50.00'	39.27'

WATER MANAGEMENT TRACT NO. 2
(TO BE MAINTAINED BY THE CONCEPT HOMES OF
LANTANA ROAD HOMEOWNERS' ASSOCIATION)

P.U.D. TABULAR DATA

TOTAL ACREAGE	33.856 AC.
TOTAL UNITS	72
GROSS DENSITY	2.126 DU/AC
BUILDING COVERAGE	4.21 AC.
STREETS & UNCOVERED PARKING	4.15 AC.
WATER BODIES	15.5 AC.
FARES	9 AC.
TOTAL OPEN SPACE	25.49 AC. 75%

4p, 11/1/16
24/44/42

SUBDIVISION *Home of Lee's Crossing*
BOOK 54 PAGE 179
FLOOD ZONE B FLOOD MAP 172A
QUAD # 13 ZONING
SE ZIP CODE 33467
PUD NAME *Plot 5*

0271-307
Meridian Surveying and mapping inc.
WEST PALM BEACH, FLORIDA

HOME'S OF LEE'S CROSSING PLAT NO. 5
PART OF LEE'S CROSSING, A P.U.D.
83-P-033

DRAWING NUMBER

DRAWING NUMBER

DRAWING NUMBER

PLAN-HOLD CORPORATION, IRVINE, CALIFORNIA